

20K DUCTILE IRON Y TYPE STRAINER FLANGED ENDS

KITZ Fig: 20FDYB

Sizes: 3/8-12inch(10-300mm)

BOLTED COVER, 40 MESH SCREEN.

Standards

• End to End: KITZ STANDARD

• End Connection: JIS B2239 20K

• Wall Thickness: KITZ STANDARD

Test Standard

• KITZ STANDARD

Approvals

MLIT 10-300 mm (3/8-12 inch)

approved

Dimensions

SIZE(inch/mm)	L	L1	H	D1	Kg
3/8	10	120.0	0.0	63.0	0.00
1/2	15	125.0	0.0	63.0	0.00
3/4	20	140.0	0.0	71.0	0.00
1	25	160.0	0.0	84.0	0.00
1 1/4	32	185.0	0.0	120.0	0.00
1 1/2	40	200.0	0.0	132.0	0.00
2	50	250.0	0.0	164.0	0.00
2 1/2	65	305.0	0.0	220.0	0.00
3	80	360.0	0.0	252.0	0.00
4	100	415.0	0.0	292.0	0.00
5	125	465.0	0.0	333.0	0.00
6	150	515.0	0.0	380.0	0.00
8	200	620.0	0.0	441.0	0.00
10	250	760.0	0.0	548.0	0.00
12	300	870.0	0.0	655.0	0.00

Material List

NAME OF PART	MATERIAL	SPECIFICATION
BODY	DUCTILE IRON	FCD-S
COVER	DUCTILE IRON	FCD-S

Specifications

20K DUCTILE IRON Y TYPE STRAINER FLANGED ENDS, BOLTED COVER, 40 MESH SCREEN.

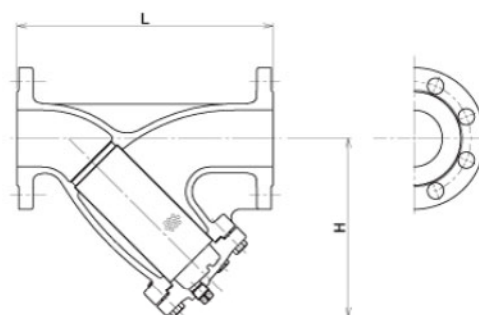
End to End : KITZ STANDARD, End Connection : JIS B2239 20K, Wall Thickness : KITZ STANDARD, Test Standard : KITZ STANDARD, Sizes :

3/8-12inch(10-300mm), Approvals : MLIT 10-300 mm (3/8-12 inch), BODY MATERIAL : DUCTILE IRON, COVER MATERIAL : DUCTILE IRON, KITZ

Fig : 20FDYB



国土



For more details, please refer to the drawing.

Pressure-temperature ratings and other performance data published in this catalog have been developed from our design calculation, in-house testing, field reports provided by our customers and/or published official standards or specifications. They are good only to cover typical applications as a general guideline to users of KITZ products introduced in this catalog. For any specific application, users are kindly requested to contact KITZ Corporation for technical advice, or to carry out their own study and evaluation for proving suitability of these products to such an application. Failure to follow this request could result in property damage and/or personal injury, for which we shall not be liable. Read instruction manual carefully before use.

KITZ

KITZ CORPORATION Tokyo Shiodome Building, 1-9-1, Higashi-Shimbashi, Minato-ku, Tokyo 105-7305, Japan
© KITZ Corporation. All Right Reserved.

ISO 9001
CERTIFIED
Since 1989