

## CLASS 125 CAST IRON Y TYPE STRAINER FLANGED ENDS

KITZ Fig: 125FCY

Sizes: 2-14inch(50-350mm)

BOLTED COVER, FLAT FACE FLANGED ENDS.

Standards

• End to End: KITZ STANDARD

• End Connection: ASME B16.1 CLASS 125

• Wall Thickness: KITZ STANDARD

Test Standard

• KITZ STANDARD

Dimensions

| SIZE(inch/mm) | L     | L1  | H     | D1  | Kg   |
|---------------|-------|-----|-------|-----|------|
| 2 50          | 250.0 | 0.0 | 157.0 | 0.0 | 0.00 |
| 2 1/2 65      | 285.0 | 0.0 | 207.0 | 0.0 | 0.00 |
| 3 80          | 315.0 | 0.0 | 237.0 | 0.0 | 0.00 |
| 4 100         | 370.0 | 0.0 | 278.0 | 0.0 | 0.00 |
| 5 125         | 420.0 | 0.0 | 321.0 | 0.0 | 0.00 |
| 6 150         | 490.0 | 0.0 | 367.0 | 0.0 | 0.00 |
| 8 200         | 570.0 | 0.0 | 457.0 | 0.0 | 0.00 |
| 10 250        | 680.0 | 0.0 | 536.0 | 0.0 | 0.00 |
| 12 300        | 800.0 | 0.0 | 625.0 | 0.0 | 0.00 |
| 14 350        | 950.0 | 0.0 | 741.0 | 0.0 | 0.00 |

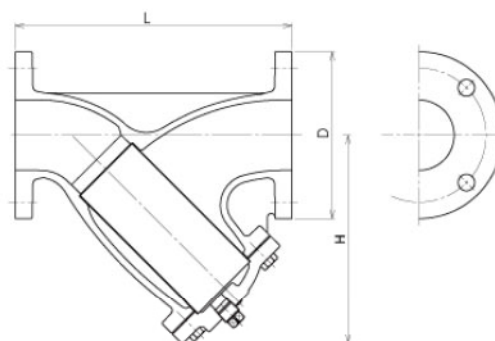
### Material List

| NAME OF PART | MATERIAL  | SPECIFICATION |
|--------------|-----------|---------------|
| BODY         | CAST IRON | FC200         |
| COVER        | CAST IRON | FC200         |

### Specifications

CLASS 125 CAST IRON Y TYPE STRAINER FLANGED ENDS, BOLTED COVER, FLAT FACE FLANGED ENDS.

End to End : KITZ STANDARD, End Connection : ASME B16.1 CLASS 125, Wall Thickness : KITZ STANDARD, Test Standard : KITZ STANDARD, Sizes : 2-14inch(50-350mm), BODY MATERIAL : CAST IRON, COVER MATERIAL : CAST IRON, KITZ Fig : 125FCY



For more details, please refer to the drawing.

Pressure-temperature ratings and other performance data published in this catalog have been developed from our design calculation, in-house testing, field reports provided by our customers and/or published official standards or specifications. They are good only to cover typical applications as a general guideline to users of KITZ products introduced in this catalog. For any specific application, users are kindly requested to contact KITZ Corporation for technical advice, or to carry out their own study and evaluation for proving suitability of these products to such an application. Failure to follow this request could result in property damage and/or personal injury, for which we shall not be liable. Read instruction manual carefully before use.

# KITZ

KITZ CORPORATION Tokyo Shiodome Building, 1-9-1, Higashi-Shimbashi, Minato-ku, Tokyo 105-7305, Japan  
© KITZ Corporation. All Right Reserved.

ISO 9001  
CERTIFIED  
Since 1989